



2020 COMMUNITY BENEFIT REPORT

HealthCare with Heart!



For nearly a century, Wayne HealthCare has been your hometown hospital, helping, healing and building on a century of caring for the communities we serve. We are fully committed to leading the charge in our community's health and wellness. This is exemplified by our new, modern, state-of-the-art facility which dramatically improves the patient experience, provides better access to the resources and services our patients need to thrive, and enables us to deliver exceptional, comprehensive, quality care right here in Darke County.

Our MISSION

Providing quality care and promoting wellness, close to home.

Our VISION

World-class, patient-centered healthcare and wellness for our friends, family and neighbors, using the best technology, provided by highly skilled and engaged employees and providers.

HealthCare WITH HEART

Growing a culture of satisfied, patient-centered employees who form the heart of Wayne HealthCare.



A Message FROM THE CEO

2020 was a unique experience for the provision and management of healthcare in Darke County and the surrounding areas. In the first quarter of the year our focus was on the development of the 75,000 square foot hospital expansion; however, this changed dramatically when COVID-19 became a new term for people all around the world.

The compassionate care and resiliency of our employees, physicians, advanced practice providers and volunteers throughout the pandemic were commendable and admirable. Together, everyone rose to the challenge while being empathetic and providing compassionate care to every patient that entered our hospital and outpatient facilities, even in the midst of uncertainty during the current pandemic.

The support extended to the hospital from the local community, region and state of Ohio was significant in indescribable ways. From companies making face-shields and gowns to providing food and notes of encouragement for our employees; all were touched by the solicitude and kindness.

As the year continued with new COVID-19 restrictions, the Mako robot for orthopedic surgery continued to be the centerpiece of business growth at the hospital. Even though surgical cases were halted by a COVID-19 state health mandate, we still had surgical growth in knee and total hip surgeries.

We received our third Commendation Award as part of the approval process for the Wayne Cancer Center. The Commendation Award is given to less than five percent of all cancer centers being surveyed. For the second consecutive year, we were rated a CMS Five-Star hospital, and in spring 2020, the Leapfrog Group awarded us with an A rating for hospital safety.

As we rounded out the year, the search for a new President and CEO was finalized and our \$60 million expansion project became a reality. The hospital continues to grow and transform the patient experience with a new modern facility—featuring hotel-like furnishings and healing natural light—that includes a new Birthing Center with 11 private suites, a 32-bed acuity-adaptable Inpatient Unit with spacious and private rooms, and a 10,000 square-foot Wellness Center with a large gym and indoor walking track.

To the community, our employees, volunteers, medical staff, hospital boards and business partners, we extend a heartfelt "thank you" for continuing to choose Wayne HealthCare as the community's source for quality services, close to home!

Wayne Deschambeau

Wayne Deschambeau
President & CEO



Table of CONTENTS

- 4** Facility Expansion Project Progress
- 5** By the Numbers / 2020 in Review
- 6** Award-Winning Care
- 7** Notable Achievements
- 8** Cancer Care
- 9** Community Outreach
- 10** Persevering During a Pandemic
- 11** Community Strong
- 12** Small Town, Big Heart
- 13** In-Kind Donations
- 14** Foundation Building on Excellence Campaign
- 16** Recognizing Foundation Board Members
- 17** Foundation Financial Overview & Giving
- 18** Foundation - At the Heart of Healthcare
- 20** Foundation Scholarship Recipients
- 22** Foundation Golf Outing
- 23** Foundation Spotlight on Assistance
- 24** Hospital Board & Senior Leadership

Building A HEALTHIER TOMORROW

Wayne HealthCare's facility expansion came close to completion at the end of 2020, bringing the community one step closer to world-class care, right here at home.

Construction work continued throughout 2020 on Wayne HealthCare's \$56 million expansion project. Much progress was made, even in the midst of the pandemic, to keep the project on track. Construction began in May of 2019 and was completed in March 2021. The 82,000-square-foot, three story addition increased the hospital's overall size to approximately 300,000 square feet and includes:

- New Entry Linked Directly with Existing Lobby
- 32-bed Inpatient Unit with Private Rooms
- New Birthing Center
- 10,000-square-foot Wellness Center



Topping-off CEREMONY

Hospital Expansion Hits Construction Milestone

Wayne HealthCare hit a construction milestone in its expansion on Friday, January 17. The final piece of structural steel for the 82,000-square-foot addition was put into place as part of a topping-off ceremony.

To celebrate the event, the hospital invited its employees to watch as Shook Construction hoisted the beam, covered with hundreds of signatures from area residents and employees, into place, signifying the completion of the addition's steel framing.



Supporting a HEALTHY COMMUNITY

BY THE NUMBERS / 2020 IN REVIEW

Inpatient STATISTICS



92

licensed beds



1,813

total admissions



7,139

days of patient care



346

surgical/interventional procedures



189

behavioral health admissions



256

births

Outpatient STATISTICS



69,452

outpatient visits



1,799

surgical/interventional procedures



17,237

emergency department visits



223,575

lab tests

Rehab STATISTICS



7,037

rehab & therapy inpatient admissions



11,235

rehab & therapy outpatient visits



120

knee replacements



55

hip replacements



1,153

total community benefit hours



\$262,783

total community benefit support



\$1,473,055

total financial assistance provided

Construction PROGRESS-2020

Wayne HealthCare is committed to providing a first-class, modern healthcare facility to meet the growing needs and expectations of the communities we serve.



FINANCIAL ASSISTANCE PROGRAM - Wayne HealthCare provides high-quality medical care to all individuals regardless of their ability to pay. To help local families unable to afford their medical expenses. The program positively impacts community members by giving them access to the care they need without the burden of undue financial stress.

Award-Winning CARE

In spite of the challenges this year, Wayne HealthCare had many achievements to celebrate. We were honored to be recognized in 2020 for a range of awards, accolades & more.



CMS 5-Star Quality Rating

Wayne HealthCare earned a **5-star quality rating** in 2020 from the Centers for Medicare & Medicaid Services (CMS) based on 57 quality measures across seven categories based on performance, safety and patient satisfaction. It is the highest rating any hospital can earn and **ranks Wayne HealthCare among the top 10 percent in the nation.** Of 4,586 hospitals nationwide, only 407 scored five stars. In the Miami Valley, Wayne HealthCare is the only independent hospital to have received five stars.



Lifestyle Center Enhancement Team

Leapfrog Hospital Safety Grade of 'A'

In Spring 2020, Wayne HealthCare was awarded a **Leapfrog Hospital Safety Grade of 'A'**—the highest score possible—from the Leapfrog Group for keeping patients safe and meeting the highest safety standards in the U.S. The Leapfrog Group is a national nonprofit health care ratings organization, who assigns letter grades of A, B, C, D and F to hospitals nationwide based on their performance in preventing medical errors, infections and other harms.

LEAPFROG
HOSPITAL
SAFETY GRADE

2020 Leap Award

Wayne HealthCare received the **2020 LEAP Award** from Strata Decision Technology. The LEAP (Lead, Excel, Achieve, and Progress) Award recognizes healthcare organizations for **outstanding performance in the areas of healthcare finance and operations** to benefit both their organization and the communities they serve. Strata provides software and service solutions for financial analytics, planning and performance to healthcare providers.



Wayne HealthCare Finance Team

Notable ACHIEVEMENTS

Jeff Subler Presented with 2020 Eagle Award

Jeff Subler, Vice President of Support Services, received the **2020 Eagle Award from the Ohio Society for Health Care Facilities Management**, a professional society of the Ohio Hospital Association. The Eagle Award recognizes a facility manager who has demonstrated outstanding performance and leadership, and has made significant contributions in energy efficiency, health care engineering, or facilities management. Jeff has served as project manager for three of the hospital's expansion projects, including the new 85,000-square-foot addition. Several successful energy-efficiency projects were also implemented under his leadership, and as a result, Wayne HealthCare was recognized as the winner of the 2018 OHA's Energy Cup award in the small hospital category for having the highest energy reduction year after year.



Terri Flood Recognized as 2020 SHSMD Rising Star

Terri Flood, Vice President of Business Development and Marketing, was recognized for being a **2020 Rising Star by the Society of Health Care Strategy & Marketing Development (SHSMD).** The award recognizes healthcare strategy professionals under the age of 40 who have demonstrated outstanding promise in their respective fields. Award recipients are distinguished by being highly successful within their organization, as well as the industry. They have exemplified core values, such as integrity, inspirational behavior, leadership, and have demonstrated a commitment to advancing the profession through innovative work.



Financial Achievement CELEBRATION

In an effort to become better financial stewards and create a culture of accountability, a three-year Financial Change Initiative was implemented in 2018. Senior Leadership challenged departments to implement at least eight changes each year that would generate a financial savings. Over the past 3 years, departments have implemented 644 projects contributing to the turnaround of the hospital's financial performance by improving operations and reducing waste. **The total savings implemented was \$7.2 million, passing the hospital's goal by \$2.7 million!** To celebrate the hospital's overwhelming success, an organization-wide celebration was held on Friday, March 19 for all employees and awards were given for high achieving departments.



Congratulations to the Patient Case Management team—the top performing department in 2020 with the highest savings at \$2,331,665!

Daisy AWARD

EXTRAORDINARY CARE FROM EXTRAORDINARY NURSES

The coveted Daisy Award is an international award that recognizes nurses who provide extraordinary, compassionate and skilled care to their patients everyday. The DAISY Award is given to nurses who exemplify the kind of caregiver that our patients, their families, and our staff recognize as outstanding role models. These special nurses:

- Are dedicated to patient care and satisfaction
- Have a positive attitude and demonstrate professionalism
- Are interested in the needs of the patient and family
- Stand for the ideals, mission and values of Wayne HealthCare



Jenny Smith, RN (right)
Surgery Department
Spring Daisy Award Winner



Deb Osborne, RN
Inpatient Department
Fall Daisy Award Winner



644

total projects implemented



\$7.2

million in savings over 3 years



\$2.7

million above the hospital's goal of \$4.5 million

2018

227 Projects

\$1,572,793

in total savings

2019

269 Projects

\$2,080,934

in total savings

2020

148 Projects

\$3,615,602

in total savings



Quality CANCER CARE WAYNE CANCER CENTER

Through a joint venture with Dayton Physicians Network and Premier Health, the Wayne Cancer Center enables us to provide local patients with convenient access to quality care and treatment, close to home. The Center is accredited and certified by the Commission on Cancer and has twice received the Commendation Level Award, the highest level of achievement. It is the only rural center in a five-state region to receive the impressive certification.

Cancer Care Services include:

- Detection & Prevention
- Clinical Trials
- Chemotherapy
- Radiation therapy
- Ostomy care
- Nutrition Services
- Rehabilitation
- Support Services
- Hospice and palliative care
- Cancer programs and support groups

Wayne Cancer Center
1111 Sweitzer Street, Greenville
937.459.4228 or 937.293.1622

Stronger THAN CANCER

New Linear Accelerator Provides Enhanced Treatment at Wayne Cancer Center

Because of a joint venture between Premier Health, Dayton Physicians Network and Wayne HealthCare, The Wayne Cancer Center now has a new linear accelerator, which delivers faster, more precise radiation therapy treatments. The tumor-fighting linear accelerator features high resolution CT imaging, robotics, and rapid dose delivery. This means more accurate treatment, reduced side effects and decreased treatment time for patients.

The cutting-edge technology really paves the way for cancer diagnosis, treatment and radiation therapy right here in Darke County. It will benefit the lives of countless community members undergoing treatment.



Ribbon Cutting CEREMONY



Pictured are Melissa Meyers, MS, CNS, APRN, Dayton Physicians; Mikki Clancy, CISA, System Vice President, Oncology Services at Premier Health; Dr. Praveena Cheruvu, MD, Radiation Oncologist with Dayton Physicians Network, Wayne Deschambeau, President & CEO; Alisha Reiss, MD, FACS, General Surgeon; Terri Flood, VP of Business Development, and Senator Steve Huffman

RIBBON-CUTTING FOR NEW LINEAR ACCELERATOR

On March 5, a ribbon-cutting ceremony was held at the Wayne Cancer Center to celebrate the new linear accelerator. Representatives from Wayne HealthCare, Dayton Physicians Network and Premier Health celebrated with approximately 60 community members. Guests toured the facility, and Ohio State Senator Steve Huffman presented a special commendation to Wayne Deschambeau, President and CEO of Wayne HealthCare, congratulating him on the partnership that brought cancer care to rural Ohio.

Community OUTREACH

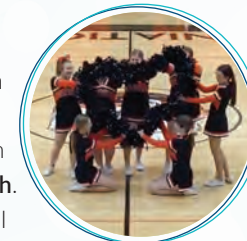
Fish Choice Pantry

Shook Construction, Chapel Electric and Wayne HealthCare combined forces to give a **generous donation of food and money** collected by their employees to the Fish Choice Pantry. *Pictured are (front) Mike Snyder, Fish Choice Pantry Treasurer; Joe Knapke, Chapel Electric; (back) Graham O'Meara, Shook Construction; and Jeffrey Subler, VP of Support Services at Wayne HealthCare.*



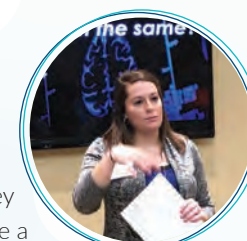
Pump It Up Cheerleading Competition

In honor of National Heart Month in February, Wayne HealthCare hosted a cheerleading competition to **raise awareness for heart health**. Videos from Darke County school cheer squads were submitted and those with the most likes on Facebook took home prizes. 1st place and \$550 went to Ansonia high school cheer squad and 2nd place and \$350 went to Greenville high school cheer squad. *Pictured is the Ansonia cheer squad.*



Healthy Moments Programs

Wayne HealthCare holds FREE monthly Healthy Moments programs designed to provide **information and education from experts** on a variety of topics. They are open to the public and include a complimentary meal. *Pictured is Robyn Feitshans, Wellness Coordinator, introducing Dr. Henry Chong, MD, Cardiologist at the "Are All Hypertension the Same" Healthy Moments Program.*



Big Brothers Big Sisters of Shelby & Darke County

We empower youth in our community to reach their full potential by supporting Big Brothers Big Sisters of Shelby & Darke County. *Pictured is our team at the Bowl for Kids' Sake event.*



Dave Knapp Ford Free Car Give-Away

Dave Knapp Ford hosted a free car give-away to help **raise money for women in the fight against breast cancer**. A donation of \$25 or more to BCADC entered participants in a chance to win a 2006 Jeep Liberty. Congrats to the winner, Rena Lavy, and thank you for all who donated to a great cause! *Pictured are representatives from Wayne HealthCare and Dave Knapp Ford at the free car give-away event.*



Ladybug Garden Donation

Members of the Ladybug Garden Club made a **generous \$500 donation** to help with the monetary shortfall facing the BCADC due to the pandemic. *Pictured is Heather Kremer, Oncology Nurse and BCADC member accepting a check from Candy Helm, Ladybug Garden Club member and incoming Vice President.*



No Shaving for a Cause

The Darke County Sheriff's Office said "no thanks" to shaving for two months and personally paid to grow their beards. A generous **\$865 was raised for BCADC and the Wayne HealthCare Cancer Fund**. *Pictured is Jill Brown, RN, Cancer Coordinator at Wayne HealthCare, accepting a check from two Darke County officers.*



Wear Jeans Day Fundraiser

During two days in October, **\$185 was raised for BCADC** by Wayne HealthCare employees who donated \$5 each day to wear jeans and their favorite pink shirts to celebrate breast cancer awareness.

Essential Drip Cafe Donation

Essential Drip Cafe, Wayne HealthCare's Coffee and Pastry shop, **donated \$270 to BCADC**.

Breast Cancer Awareness

In recognition of Breast Cancer Awareness Month, Wayne HealthCare distributed **1,040 free insulated lunch totes** which included information about self-directed testing, breast cancer services and the importance of mammograms and early screenings. The bags were distributed to all patients who had scheduled appointments in our Women's Center, Imaging Center and Outpatient Lab. 11 mammograms were scheduled. *Pictured is Lisa Trittschuh, Registration Greeter.*



Clock in For a Cure

Wayne HealthCare held its annual "Clock in for a Cure," which is an initiative that allows employees age 40 or older to get a **breast cancer screening** during work hours while on the clock.

Persevering DURING A PANDEMIC

Looking back over this past year, it is hard to put into words all that we have gone through together. The impact of the worldwide Coronavirus pandemic has been dramatic and sweeping. The entire country underwent emergency measures to prevent the spread of COVID-19, including shelter in place requirements, public gathering restrictions, social distancing and wearing masks in public. Schools changed to at home learning and businesses went remote, changed formats to limit gatherings, or closed completely.

The pandemic also completely changed the way hospitals function day to day. Wayne HealthCare had to adapt quickly to evolve with the situation and change processes, protocols and safety precautions in response to the ever-changing requirements of our health agencies and government. The hospital responded quickly and efficiently in so many ways, and we could not be more proud.

Together, we worked to protect our patients, our community, and one another, to ensure that Wayne HealthCare continued to be available to anyone who needed care. We witnessed extraordinary resilience during a period of incredible uncertainty and overwhelming need. Throughout the pandemic, we relied heavily on the strength of our dedicated team of caregivers who served on the frontlines. They selflessly cared for you and your loved ones, sacrificed time at home with their families, and put their own well-being at risk for the greater good of our community.

This year brought unprecedented loss and struggle to every community and every hospital in the world. And still, there is no place we would rather have been than standing alongside the dedicated caregivers of Wayne HealthCare.

COVID Services and Safety Precautions Implemented

- COVID Task Force created
- Classes, workshops, community events canceled
- Service lines & procedures restricted
- Visitor policy restrictions
- Elective surgeries canceled
- COVID information line created
- Temperature screenings
- COVID drive-thru testing
- Virtual visits for Walk-In Care
- Thermal imaging technology
- 1st vaccines administered to healthcare workers



Temperature screening for those entering the hospital



Nurse being fit tested for an N95 mask



Thermal imaging technology to screen those entering the hospital



Patient receiving blood draw for COVID antibody testing



First COVID-19 vaccines administered to frontline workers

Community STRONG

Even during the most challenging times, Wayne HealthCare has continued to be an essential cornerstone for our community, committed to caring for our community—no matter what. We are STRONGER TOGETHER.



COVID Testing Assistance KEEPING YOU & YOUR FAMILY SAFE

At Wayne HealthCare, our number one priority is your health and safety. To fight against the spread of COVID-19, The Wayne HealthCare Foundation provided **\$3,175 in financial assistance** for COVID-19 testing to **42 community members** who could not afford the test. Wayne HealthCare also conducted **COVID-19 drive-thru testing** for the community throughout the year, beginning in April. As your trusted community hospital, we're here to support you and your family through COVID-19. Pandemic or not, we're committed to caring for the ones you love!



\$3,175
was provided for COVID-19 testing

42

community members were assisted with COVID testing



COVID Thermometer Darke County Schools Program GETTING BACK TO SCHOOL SAFELY

Wayne HealthCare, the Foundation, Wayne Health Sports, Midmark Corporation, the Health Department and Darke County School Nurses came together to donate **\$18,712 in supplies** to help schools open back up safely for in-person classes. A total of **5,480 digital stick thermometers** and magnets with daily screening guidelines for COVID-19 symptoms were distributed to Darke County families and **80 non-contact laser thermometers** were donated to Darke County schools. Additionally, pediatric masks were provided to the school nurses' offices.



\$18,712
in supplies were donated to keep our community healthy and reopen our schools



5,480
digital thermometers were distributed to the community



80
non-contact laser thermometers were donated to Darke County schools



COVID Assistance Program SUPPORTING OUR COMMUNITY

In 2020, the Foundation provided **\$121,495 in assistance** to patients, employees, and their families with financial needs during COVID shutdowns. Of this, our We Care Program provided **51 members of our compassionate and caring staff** with **\$99,607 in assistance** to help with basic needs such as mortgage/rent, utilities, medical care, food and transportation assistance. A large emphasis of our care was directed towards our healthcare workers and their families, who were deeply impacted by COVID-19. It was important to provide support for our caregivers, so they could continue to care for our community.



\$121,495
in assistance was provided to patients, employees and their families during COVID shutdowns

51

Wayne HealthCare employees were assisted in 2020



\$99,607
was provided to employees to help with basic needs



Small Town. BIG HEART.

Throughout the year, big-hearted individuals and local businesses sent a steady stream of encouragement and support to our weary healthcare workers. Whether it was financial contributions, personal protective equipment, handmade face masks, a handwritten card or note, encouraging signs, gift certificates, clothing, or delicious meals and snacks generously donated by area restaurants and individuals—YOU lifted our spirits, warmed our hearts, and gave us hope! From all of us at Wayne HealthCare, *Thank you!*



In-Kind DONATIONS

We continue to be humbled by the endless generosity and outpouring of support received from our community during the pandemic. Well over \$70,000 of in-kind donations were given to hospital. We are so grateful for this wonderful community we have the privilege to care for every day!



\$70,000+
of in-kind donations were provided to the hospital

- #ohiosavesahero Foundation
- Arcanum Butler Local Schools
- Arcanum PTO
- Auto Charge
- Barry Family Dentistry
- Pam Beam
- Beanz Buttercream Bakery
- Cassy Benazer
- BMF Fitness
- Bohndox
- Church of the Nazarene
- Coffee Pot
- Commissioner Matt Aultmann
- Ms. Joyce Conrad
- Dr. Dean & Staff
- Wayne & Sharon Deschambeau
- Dollar General
- Dominos
- East Main Church of Christ
- Edison State Community College
- Eikenberry's Grocery
- EUM Church—Pam Snyder & Pastor Harper
- Ford Motor Company
- Rachel Francis & Family
- Franklin Monroe Schools
- Connie Ganger
- GDAHA
- Dr. Scott Gray
- Harbor Freight
- Hayes Family
- Heidelberg
- Betty Henry
- Integrated Leadership Systems
- JAFE Decorating
- Mary Kell
- Keller Grain
- Ms. Carolyn Kinniger
- Greenville Schools—Med Tech Program
- Lauren Henry & family
- Kettering Network Radiologist
- Kitchen Aid
- Whitney Magoteaux
- Make-It Dayton

- Marco's Pizza
- Diane Martino
- Teresa McClear
- McDonald's
- Dr. McKinny
- Midmark
- Zachary Miller
- Montage Café
- Becky Morrissey
- Steve Myers
- The Natural Path
- Newton Local School District
- Steve North
- Annie Oiler
- Sarah Osterloh & family
- Sharon Osterloh
- Papa John's
- Phelan Insurance
- Prosperity Promotions
- Mr. & Mrs. Melvin Pyle
- Remedy Plumbing
- Joyce Romanski
- Mindy Saylor
- Peter Sise & Amy Walls
- Terrie Spieth
- St. Henry Tile Company
- Swift Gilly Boutique
- Taco Bell
- Debbie Taylor
- Tieks #Sew TOGETHER
- Tribute Funeral Home
- TriVillage Local Schools
- UPS store
- Versailles Dental—Dr. Sommer
- Versailles Rehab & Health Care Center
- Versailles Schools
- Wayne Builders
- Western Ohio Girl Scout Troop #34132
- Whistle Stop
- Bill White
- Winery at Versailles
- And numerous anonymous donors

Thank you to any other donors who we may have inadvertently omitted. Your generosity was greatly appreciated!

Light Up THE NIGHT

A SHOW OF SUPPORT FOR OUR FRONTLINE HEALTHCARE WORKERS

The night sky over Greenville and Wayne HealthCare glowed in shades of red, white, and blue as a parade of Darke County police, fire and EMS squads lit up the night to build people's spirits and show a sign of solidarity for first responders and frontline healthcare workers during the COVID-19 pandemic. We truly appreciate the amazing display of support. You brought us hope and light during a dark and uncertain time.



Thank you for your thoughtful, heart-warming support!





Building ON EXCELLENCE

WAYNE HEALTHCARE CAPITAL CAMPAIGN

The Wayne HealthCare Foundation is honored to raise funds for the hospital's new facility expansion through the **Building on Excellence** Campaign. We invite you to consider making a significant gift as we work towards our goal of raising \$5 million of the \$56 million project cost. This is an excellent opportunity to make a positive and lasting impact on the health and wellness of our community - today, tomorrow and for generations to come.

How to GIVE

Some donors may choose to make a one-time gift; while others may request a payment schedule, which will allow them to extend the limits of their generosity and commitment. All donations of \$5,000 or higher may be pledged over a three to five year period.

Gifts can be made in the form of cash, checks, credit card payments, stock, real estate, life insurance and other securities. Pledge payments can be set up to draft at the frequency of your choice.



To make a donation for the Building on Excellence Campaign, please contact:

Lauren Henry, Foundation Director
937.569.6408
Lauren.Henry@waynehealthcare.org

Online donations can be made at:
WayneHealthCare.org



32-Bed Inpatient Unit with Private Rooms



New Birthing Center with Private Suites



10,000 sq. ft. Wellness Center



The Wayne HealthCare Foundation is a nonprofit organization that was established to acquire and accept charitable gifts for Wayne HealthCare, in order to perpetuate and advance the highest quality of healthcare services at Wayne HealthCare and in Darke County.

The mission of the Foundation is to collaborate through philanthropy with Wayne HealthCare in order to enhance community education and wellness close to home.

Wayne HealthCare Foundation
 835 Sweitzer Street
 Greenville, Ohio 45331
937.569.6408

WayneHealthCare.org/Foundation

Wayne HealthCare Foundation is a qualified 501(c)(3) not-for-profit organization. Gifts are tax deductible as allowed by state and federal law.

Giving OPPORTUNITIES

MAKE YOUR PLACE IN WAYNE HEALTHCARE HISTORY!

As a part of the Building on Excellence campaign, the Foundation is recognizing donors in a manner that reflects their generosity and giving heart. We hope that your gift will inspire others to follow your generous example.

Donor Recognition

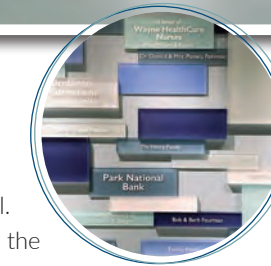
Giving levels were established by the Foundation in order to honor donors whose giving has an extraordinary impact on the hospital.

Named Giving Opportunities and Donor Wall Recognition will be available according to giving level and will be awarded on a first come, first serve basis.



DONOR WALL OPPORTUNITIES

Donors will be recognized with a wall plaque on our Donor Wall—with the inscription of their choosing—according to their giving level. The Donor Wall is located on the first floor in the new expansion and can be seen by visitors as they take the walkway between the lobby and the Wellness Center.



NAMED GIVING OPPORTUNITIES

Compassionate Visionary \$1,000,000 or more

- Project Building naming rights

Compassionate Innovator \$500,000 to \$999,999

Naming rights available:

- East Entrance
- West Entrance

Compassionate Philanthropist \$250,000 to \$499,999

Naming rights available:

- Special Beginnings Unit
- Wellness Center
- Private Telemetry Unit

Compassionate Humanitarian \$100,000 to \$249,999

Naming rights available:

- Wellness Courtyard & Garden
- Community Rooms (2)
- Demonstration Kitchen
- Employee Fitness
- Inpatient Waiting Room

Compassionate Ambassador or Compassionate Angel \$25,000 or more

Naming rights available:

- Special Beginnings Rooms (13)
- Inpatient Rooms (32)
- Special Beginnings Garden Wall (2)

Wellness Blossoms Program \$1,000 or more

Naming rights available:

- Green Space/Trees (75)

We appreciate each and every person who shares their talents and financial resources. Opportunities for gifts at every level are available and donations of any amount will help.

Compassionate Friend Up to \$1,000

For more information about giving levels or to make a donation, contact Lauren Henry at 937.569.6408.

2019/2020 DONORS

A heartfelt thank you goes to the following donors who have helped kick-start the **Building on Excellence** campaign with their gracious giving. We are grateful for your generous support!

COMPASSIONATE AMBASSADOR

GNB Banking Centers
 Park National Bank

COMPASSIONATE ANGEL

Brethren Retirement Community
 Rodney Oda
 Doug & Susan Shields

WELLNESS BLOSSOMS PROGRAM

Susanne & Dennis Barga
 Jenifer Berger

In Memory of Dr. Daniel Berger
 Dr. Samuel Brubaker
 Wayne & Sharon Deschambeau
 Dale & Karen Dircksen
 Dr. John Dutro
 Diane Evans
 Family Health
 Terri Flood
 Kim & Brad Freeman

In Memory of Sharon Fourman
 Dr. Safet & Dr. Anna Hatic
 Dr. Lynne Hawley & Michael Snider
 The Henry Family
 Esther Lenhart & Families
 Dr. Donald & Pamela Pohlman
 State of the Heart Care
 John & Diane Swallow
 John & Ginger Warner
 Dan & Jackie Watren
 Wayne Builders / St. Henry Tile Co.
 Joel & Jennifer Williams

COMPASSIONATE FRIEND

Allied Environmental Services
 Justin & Jenny Howard

Our LEADERSHIP

2020 Foundation Volunteer Board of Directors

Susie Weisenbarger – *Chairperson*
 Tonya Breymier – *Past Chairperson*
 Dr. Rick Bowlin – *Vice Chairperson*

Matt Aultman

Susanne Barga

Randall Breaden

Dr. Shelly Burns

Rodd Hale

Bob Nelson

Jim Stamcoff

Matt Staugler

Mike Stegall

Shane Stonebraker

Kristi Strawser

Larry Ullery

Wayne HealthCare Board Liaisons

Travis Fliehm

Dr. John Dutro

Foundation Staff

Lauren Henry – *Executive Director*

Wayne Deschambeau – *President & CEO*

Jennifer Williams – *V.P. of Finance & CFO*

Jamie Eshbaugh – *Controller*

In Appreciation OF YOUR SERVICE

SAYING GOODBYE TO LONG-STANDING BOARD MEMBERS

In 2020 The Foundation has had two wonderful board members that have retired. Thank you for your dedication and outstanding years of service, Mike Stegall and Bob Nelson.

These individuals have been instrumental in our success and have been invaluable mentors and leaders. We are extremely thankful for their dedication and exemplary service. Their enthusiasm for creating community partnerships to enrich Wayne HealthCare and their generous leadership will impact future generations of patients and providers. Congratulations on your retirement!



Mike Stegall
Served 9 Years

Retired off the board
December 31, 2020



Bob Nelson
Served 9 Years

Retired off the board
December 31, 2020

In Memory of MARVELLA FLETCHER

In late 2020, hospital retiree and past volunteer board member, Marvella Fletcher, became ill with COVID-19. In early 2021, Marvella passed away from this very tragic illness in the height of the pandemic. We mourn Marvella, and want the community to know her importance to Wayne HealthCare, our Foundation, and the community she so compassionately served.

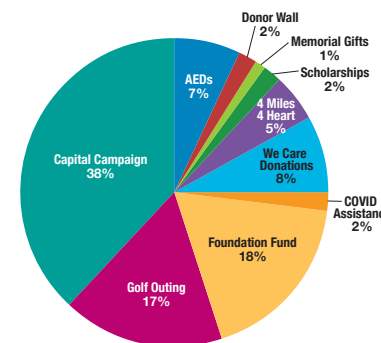
Married to Tom Fletcher, Marvella began her employment with Wayne HealthCare in 1998 as the Chief Financial Officer (CFO). She celebrated her retirement 10 years later in 2008. Following her retirement, Marvella joined the Wayne HealthCare Foundation Volunteer Board of Directors, and dedicated her time to growing programs and helping others through community wellness programs, financial assistance programs, scholarships for youth studying to be medical professionals, and celebrating Wayne HealthCare's retirees annually. Marvella retired off the Board in December of 2019, after nine generous years of leadership for the Wayne HealthCare Foundation. Notably, Marvella was very passionate about nurse studies, and she was instrumental in helping us partner with Edison State Community College to assist with their nursing scholarship and pinning financial aid programs. **Marvella made a huge impact at Wayne HealthCare and will forever be in our hearts.**



IN MEMORY OF
MARVELLA FLETCHER
WNC RETIREE, VOLUNTEER
& FOUNDATION BOARD

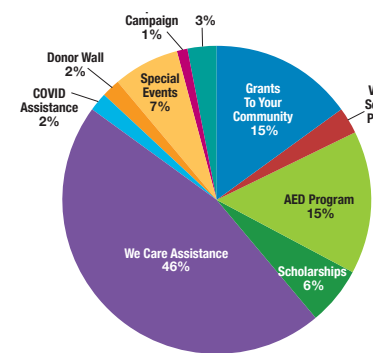
Financials AT A GLANCE 2020 IN REVIEW

Your Gifts Make a Difference – Donations to the Foundation



AEDs - Life-Saving Education & Devices for the Community	\$21,387
Donor Wall & Veteran Memorial Garden Donations	\$7,430
Memorial Gifts Honoring Loved Ones in Your Community	\$1,300
Donations to Support Our Scholarship Program	\$5,830
4 Miles 4 Heart & Health Donations for Vascular Screenings	\$13,903
We Care Donations to Help Hospital Employees in Need	\$23,105
COVID Assistance	\$5,450
Foundation Fund - Greatest Need	\$55,652
Special Community Event - Annual Golf Outing	\$51,765
Building on Excellence - Hospital Expansion Campaign	\$116,200
Total Donations	\$302,022

Enhancing Health Education & Wellness Close to Home – Expenses



Grants to Your Community	\$32,004
Vascular Screening Program	\$6,875
AED Program	\$32,404
Scholarships	\$13,000
We Care Assistance Program	\$99,562
COVID Assistance	\$3,175
Donor Wall & Veteran Memorial Garden	\$3,598
Special Events	\$14,800
Building on Excellence	\$1,008
Management & General	\$7,473
Total Expenses	\$213,899

Income: \$88,123

2020 Statement of Financial Position

Assets

Current Assets:	
– Cash & Equivalents	\$64,627
– Investments	\$413,405
– Investments CDs	\$178,572
– Current A/R & Pledges Receivable	\$24,958
Total Current Assets:	\$681,562
Other Assets:	
– Donor Restricted	\$84,568
– Long-Term Pledge Receivable	\$47,158
Total Assets:	\$813,288

Liabilities & Net Assets

Liabilities	\$0
Net Assets:	
– Unrestricted	\$657,901
– Temp Restricted	\$155,387
Total	\$813,288

Total Revenue:	\$302,022
Total Expenses:	\$213,899
Operating Income:	\$88,123
Investment Gain/(Loss) at Year-end:	\$73,818
Net Income:	\$161,941

Your Gift Improves the Health of Your Community Giving is Easy

The Wayne HealthCare Foundation accepts charitable gifts to further our mission.

Annual, Monthly or Quarterly Donations

Giving can include annual donations in the form of cash, checks, credit card payments or stock. We can also set these up to draft monthly or quarterly for a sustaining gift.



Legacy Gifts

Legacy gifts in the form of bequests, trusts, life insurance and other estate planning vehicles are accepted and can secure the future of saving lives by providing state-of-the-art healthcare here at home.



NEW! Online Giving

The Foundation is excited to add a new online platform for giving as well as new options for annuities.



With your help we can continue to serve you with quality care and wellness close to home. For more information or to give a gift, please call or visit:

937.569.6408
 WayneHealthCare.org

Wayne HealthCare Foundation

At the Heart OF HEALTHCARE

4 Miles for Heart & Health

Due to the pandemic, the fifth annual 4 Miles for Heart & Health was held virtually on June 27, 2020. **74 Participants from 8 states**, as far away as Colorado and Florida, **helped raise \$8,700** to support this wonderful cause to assist the community with discounted vascular screenings. The event is dedicated to the loving memory of Bob Menke, who passed away from heart disease at the age of 38. The event raises awareness about the importance of heart health and the risks associated with heart disease. The hope is to help others detect cardiac issues early and help save lives.

Thank you to our major partners and sponsors including Midmark Corporation, Menke Consulting, Rocketship Sports, Brookside Laboratories, Premier Health, Orthopedic Associates, Versailles Lions Club, Dean Dorton, and the Bruns Animal Clinic.



Sign up, donate or learn more about 4 Miles for Heart & Health at: 4milesforheart.com



In 2020, the virtual 4 Miles for Heart & Health event had **74 participants** from **8 states** and helped raise **\$8,700**.

Vascular Screening Program

Each February, Wayne HealthCare shines a light on offering discounted vascular screenings in celebration of "Pump Month." Events such as Heart Art featuring Drab to Fab and 4 Miles for Heart & Health assist with funding. Since the program's inception, a total of **1,424 discounted or free screenings** have been provided, offering a **savings of \$37,699**. In 2020, **272 screenings** were provided, offering a **savings of \$6,875**.

Heart Disease continues to be the number one cause of death in our community. These non-invasive, preventative vascular ultrasounds can help identify risks that could lead to a future stroke or heart attack. On average 1 in 3 patients have a result that shows a need for follow-up care. The Foundation's goal is to change outcomes for the better and ultimately save lives. **It's all about early detection and healthy hearts!**

272
patients had discounted vascular screenings in 2020

\$6,875
in savings was provided to the community in 2020

1 in 3
screening results show a need for follow-up care

All screenings are self-directed and do not require a physician's order.

To schedule a vascular ultrasound, call 937.547.5715.



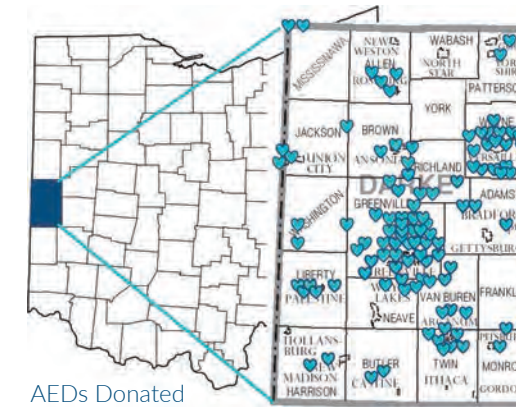
At the Heart OF IT ALL

AED Program

In partnership with Midmark Corporation and Spirit Medical Transport, Wayne HealthCare Foundation provides the Automated External Defibrillator (AED) Program to local nonprofit organizations in our community. Nonprofits are able to apply for the grant program to have an AED at their facility to help save lives in a cardiac emergency. A maintenance program is also available for safe and timely replacement of pads and batteries.

Midmark is the main corporate donor and Spirit provides CPR/AED training and certification for the nonprofit staff and volunteers. We are honored to have the community's support for this program. The program not only serves to save lives, but has also educated over 1,500 individuals in this community with CPR/AED certification. Thank you for the generosity of all our corporate and individual community donors for giving to the AED program.

To apply for the AED Grant Program, please contact Lauren Henry at 937.569.6408 or Lauren.Henry@waynehealthcare.org.



The AED program has provided **136 AEDs** to local nonprofits

.....

1,500+ community members have been CPR/AED certified

29
AEDs were donated in 2020

300+
community members were CPR/AED certified in 2020

\$23,200
in savings was provided to the community in 2020



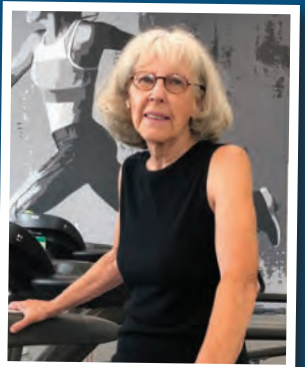
Patient TESTIMONIAL

The AED program helps create better outcomes for our patients and loved ones.

During Pump Month, Kay Sloat, one of our local community members, saw information about the discounted vascular screenings and decided to have herself and her husband screened. Her family had been stricken with cancer and had lost loved ones, so she and her family were very diligent about getting preventative screens. She decided this was the year to focus on their hearts.

Kay's vascular ultrasound came back with some issues and she needed follow-up care. She and her cardiologist worked together on a plan to get her on the path to better heart health and add quality years to her life. She was referred to our Lifestyle Enhancement Center—renamed the Wellness Center as a part of the hospital's new facility expansion—and she began the Cardiac Rehabilitation Maintenance Program. Kay is doing well and feels much stronger, even though at the time of the test, she didn't realize she wasn't feeling well.

This is a great success story to show our goals with these programs. **We want to save lives and offer better health outcomes for our community.** Without a vascular screening, the outcome for Kay could have been much different.



The Future OF HEALTHCARE

The Wayne HealthCare Foundation awards annual scholarships to area students who have an interest in pursuing a career in a medical field. We are honored to serve the community and our future leaders in healthcare with this prestigious opportunity.

Congratulations! 2020 Scholarship Recipients



\$16,000

was awarded to area graduates pursuing a medical career in 2020



\$88,000

in scholarships has been donated by the Foundation over the last 6 years



High School Recipients – Spring 2020 Graduates



Brock Shellhaas
Ansonia HS

Future Plans:
Biology/Pre-Dentistry at University of Cincinnati



Olivia Wright
Ansonia HS

Future Plans:
Nursing at Edison State Community College



Araya Musselman
Arcanum HS

Future Plans:
Psychology at Bowling Green State University



Sarah Abell
Greenville HS

Future Plans:
Hospital Pharmacy with Biomedical Chemistry at Indiana Wesleyan University



Angelina (Annie) Hayes
Greenville HS

Future Plans:
Speech/Language Pathology at Miami University



Alec Barga
Versailles HS Graduate

Spring 2019
Area of Study:
Exercise Science/Military Studies at University of Toledo



Julia Mellott
Tri Village HS Graduate

Spring 2019
Area of Study:
Nursing/BSN at Indiana University East



Kirsten Zink
Franklin Monroe HS Graduate

Spring 2019
Area of Study:
Dental Hygiene at The Ohio State University



Kourtney Kretschmar
Greenville HS Graduate

Spring 2018
Area of Study:
Nursing/BSN at Bluffton University



Emma Klosterman
Greenville HS

Future Plans:
Nursing at Otterbein University



Josilyn (Josi) Worden
Greenville HS

Future Plans:
Nursing at University of Cincinnati



Caitlin McEldowney
Versailles HS

Future Plans:
Nursing at Edison State Community College



Deanna Hesson
Versailles HS

Future Plans:
Occupational Therapy Assistant at Rhodes State College



Payton Berger
Versailles HS Graduate

Spring 2018
Area of Study:
Psychology with emphasis on Occupational Therapy at University of Indianapolis



Rachel (Shellhaas) Jamison
Versailles HS Graduate

Spring 2016
Area of Study:
University of Kentucky Graduate in Neuroscience, Pursuing Medical School in Fall 2020 at The Ohio State University



Trent Collins
Mississinawa Valley HS Graduate

Spring 2019
Area of Study:
Athletic Training/Pre-Med at Ball State University

Scholarship applications are accepted from January 1st through March 1st. Forms can be submitted online at WayneHealthCare.org/Foundation.

For more information, please contact Lauren Henry at 937.569.6408 or lauren.henry@waynehealthcare.org.

Foundation GOLF OUTING

Our sincerest thanks for your incredible drive to give the gift of green!

The Wayne HealthCare Foundation 13th Annual Golf Outing was held on September 28 at Turtle Creek Golf Course. Despite some rain and falling temps, the event hit a record high for the Foundation thanks to our community! The outing hosted 144 golfers, featured 54 sponsors, and raised \$38,500. We were also fortunate to have in-kind donations worth \$6,034. We are so thankful to all of the amazing players and sponsors for their support. This event continues to grow each year and helps serve the Foundation by supporting our scholarships, AED program, vascular program, and patient assistance program, just to name a few!

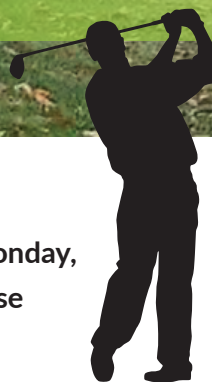


DIAMOND SPONSOR:
Shook Construction

PLATINUM SPONSORS:
Kettering Anesthesia Associates
Orthopedic Associates

GOLD SPONSORS:
Atalanta Sosnoff
Brethren Retirement Community
Chapel Electric
Dean Dorton
Edison State Community College
Fitzwater Tree & Lawn Care
Innovative Office Solutions
Kettering Network Radiologists Inc.
Park National Bank
Phelan Insurance Agency
Piper Sandler
Premier Health
Solid Blend Technologies
Spirit Medical Transport
State of the Heart Care
Valley Interior Systems

HOLE-IN-ONE SPONSORS:
Becker Capital Management
Dave Knapp Ford
Managecast Technologies
RBC Inc.



The 2021 golf outing will take place on Monday, September 27th at Turtle Creek Golf Course with both 8:00 am and 1:30 pm tee times.



golfers participated



sponsors featured



was raised



of in-kind donations made

Spotlight on ASSISTANCE PROGRAMS

Living with Lymphedema Program

The Living with Lymphedema Program provides compression garments and therapy for local patients who are suffering from lymphedema.

\$1,505
was provided for patients in need

7
patients assisted with lymphedema garments & therapy

\$330
donated to the hospital through the Kroger Rewards Program*

WAYS TO GIVE
Amazon Smile Program** - 0.5% back on eligible purchases
Buffalo Wild Wings - 15% donated back the 1st Wednesday of every month

Cardiac & Pulmonary Rehabilitation Maintenance Assistance Program

Provides financial assistance for cardiac and pulmonary rehabilitation needs, such as clinical maintenance and exercise programs and transportation needs.

22
patients received assistance for their rehab needs

\$1,183
in total assistance provided for Cardiac & Pulmonary Rehab Maintenance Programs

24
pulse oximeters donated for Cardiac & Pulmonary Rehab Maintenance Programs

\$7,430
donated to the Donor Wall & Veteran Memorial Garden to honor loved ones

\$11,781
in Paid Time Off (PTO) donations were gifted by hospital employees

\$20,325
donated to local nonprofit organizations for prevention, wellness & health education

\$24,100
donated to the hospital on Giving Tuesday - an anonymous donor matched the first \$5,000

Cancer Care Assistance Program

Complements our partnership with Breast Cancer Awareness of Darke County, providing additional support for cancer-related needs, such as therapy, scans, 3D mammograms, financial assistance and more.

4
patients assisted with low-dose CT lung scans

\$2,481
in total assistance was provided for cancer care

150
CPR pocket masks were donated to Ansonia EMS

*Link your Kroger Rewards to help the hospital by selecting Wayne HealthCare Foundation (SP367).
**Turn on AmazonSmile in your Amazon account settings, and select the Wayne HealthCare Foundation.

Upcoming IN 2021

The Wayne HealthCare Foundation is happy to serve our community and hospital by partnering with these special programs coming in 2021!

NEW PROGRAM Clinical Oncology Exercise Program

A new Clinical Oncology Exercise Program will begin in late summer 2021. It is a 12-week program that will be held in our new Wellness Center for those going through cancer treatments or those in remission/recovery. The goal of the program is to prevent or reduce side effects of cancer treatment and improve quality of life during and after treatment. The program is designed to help with pain management and improve functionality with activities of daily living affected by treatment. The Foundation will fund most of the program so it can be offered at just \$25/participant.



A NEW WAY TO GIVE Gifts of Grain

DONATE GRAIN. SAVE MONEY. MAKE A DIFFERENCE.

Giving a gift of grain to the Wayne HealthCare Foundation is a simple and unique way to make a charitable gift while achieving tax savings. Farmers can gift a dollar amount, number of bushels, or a whole field of grain. Contributing grain often allows the farmer to avoid the sale of the commodity as income, while the production costs may still be deductible. Please consult with your accountant or legal advisor to see if this option is best for you.



For more information about these programs, contact:
Lauren Henry, Foundation Director
937.569.6408 - lauren.henry@waynehealthcare.org



Board of Trustees 2020

Eric Everman
Chairman

Todd Durham
Vice Chairman

Daniel Watren
Sec-Treasurer

John Dutro, M.D.
Past Chairman

Janelle Brinksneider

Travis Fliehman

Mary Garman

Anna Hatic, DO

Lynne Hawley, MD

Don Miller

Alex Pohlman

Carrie Schmidt

Scott Shelton

Susan Shields

Tim Snider

Geoff Walker

John Warner

Senior Leadership

Wayne Deschambeau
President & CEO

Terri Flood
Vice President of Business Development

Kimberlee Freeman
Vice President of Patient Care Services/CNO

Timothy Kathman, MD
VP of Medical Affairs

Shelton Monger
Vice President of Information Services/CIO

Peggy Schultz
Vice President of Human Resources

Jeff Subler
Vice President of Support Services

Jennifer Williams
Vice President of Financial Services/CFO

WayneHealthCare.org

835 Sweitzer Street
Greenville, OH 45331
937.548.1141

